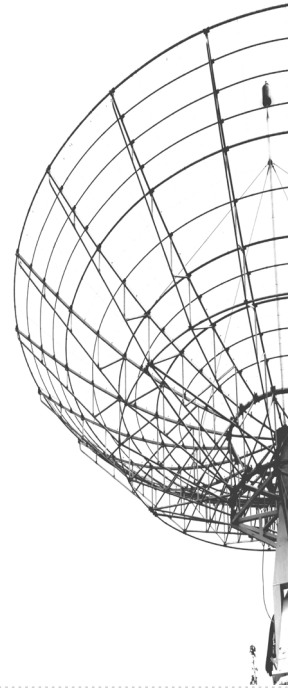


RCS 100/400

DVB-S
DVB-S2
DVB-S2X

HIGHEST PERFORMANCE WITH AN INTUITIVE MANAGEMENT
MONITORING SYSTEM FOR DVB-S/S2 NETWORKS
TO ANALYZE AND ENSURE THE QUALITY OF THE



PROFESSIONAL MONITORING:

RF ANALYSIS

- Real Time spectrum
- Two ways of operation: channel analysis or multiple channel polling
- Signal quality measurements: Power, PER, MER, CBER (DVB-S), LM, LDPCBER (DVB-S2)
- Alarm log (real time) and representation (time evolution)

TS ANALYSIS

- Bitrate
- Level1, 2 priority error analysis as TR 101 290 recommendations
- Table repetition and quality analysis
- Services treeview

AND MUCH MORE...

- Video thumbnails
- Local display of measurements and alarms
- RCS100: 1 RF input, 1 ASI input, 1 ASI output, and HDMI audio/video output
- RCS400: 4 RF input, 4 ASI input, 2 ASI output, and HDMI audio/video output
- Ethernet connectivity
- HTML5 control application
- SNMP v2.0 alarms

OPTIONAL FEATURES

- ✓ IP (TSoIP) INPUT
- ✓ Redundant IP INPUT
- ✓ Full historical measurements with alarms analysis
- ✓ Advanced Measurements (Full Spectrum, Constellation)
- ✓ Extended TS Analysis (Level 3 priority errors)
- ✓ TS Recording
- ✓ Live Streaming

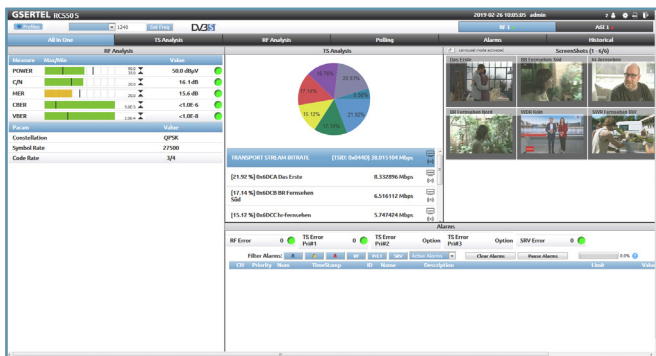
GSERTEL

RCS 100/400

ADVANCED REMOTE MONITORING SYSTEM FOR DVB-S/S2

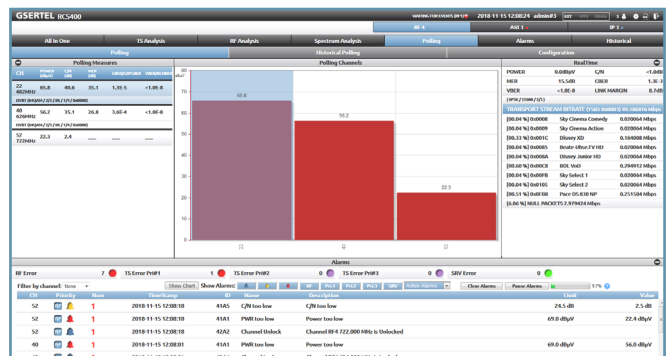


MANAGEMENT SYSTEM



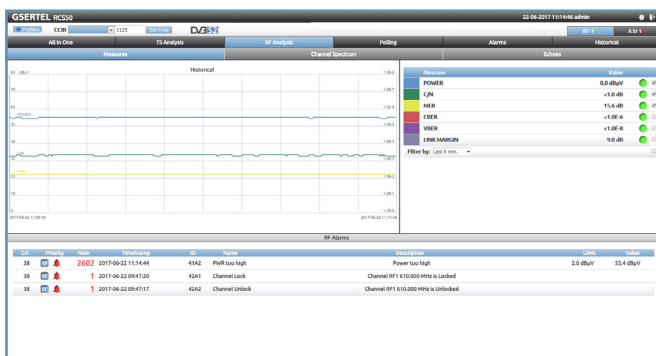
ALL IN ONE

Shows an overview of the channel status on one screen. It shows spectrum, services, measurements, alarms, Pids. All integrated in a single view for quick analysis



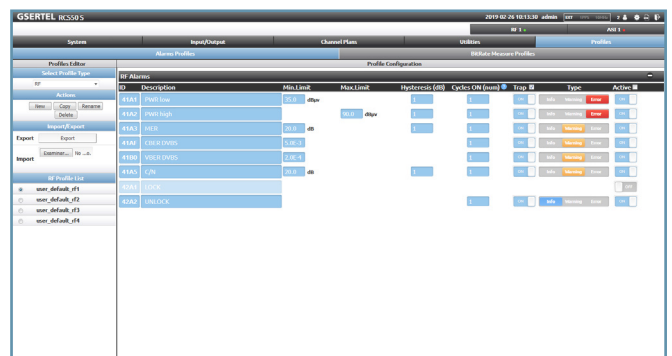
POLLING

Continuous measuring of an user-defined number of channels



MEASUREMENTS

Graph representing the historical measurements, and list with current values



ALARMS PROFILES

User configuration alarms profiles for each channel

SPECIFICATIONS

Standards

ETSI EN 300 421 (DVB-S)
ETSI EN 302 307 (DVB-S2)

Inputs

RF: Up to 4 x 75 Ω N connector
RF Input Frequency:
950MHz to 2150GHz
10MHz BNC 50 Ω
TS: Up to 4 x ASI IN BNC 75Ω.
IP: 2 x GE RJ45 (TSoIP) (opt.)

Outputs

TS: 1 x ASI OUT BNC 75Ω
A/V: 1 x HDMI

RF Measurements

40MHz Spectrum
Power, C/N, MER
CBER, VBER (DVB-S)
Link Margin, BCHBER, LDPCBER (DVB-S2)
Constellation (opt.)
Full Spectrum (opt.)

MPEG Measurement

Level 1,2 y 3 priority errors (level 3 opt.) TR 101 290
Alarms log analysis

IP flow measurements (opt.)

Packet arrival max. & min
IP & UDP payload bitrate
Media loss rate
Loss IP frames
Corrected IP frames

Mechanical characteristics

1U 19" rackable unit
Size: 482mm W x 348mm D x 41mm H
Working temperature: 0 a 40 °C
Storage temperature.: 0 a 50 °C

Electrical Characteristics

Input 100 - 240 VAC 50-60Hz 1.4A

Interfaces

1 x USB 2.0
1 x Ethernet RJ45
LCD Graphic display
HDMI

Control protocols

HTML and SNMP